

# ***G HEAD***

## EXTENDED RANGE OF MOTION

With extended motorized oscillation and arc height control, the G Head makes a versatile platform for overlay and cladding applications.



Designed for a wide range of pipe sizes



Up to 18.5" [470mm] oscillation stroke



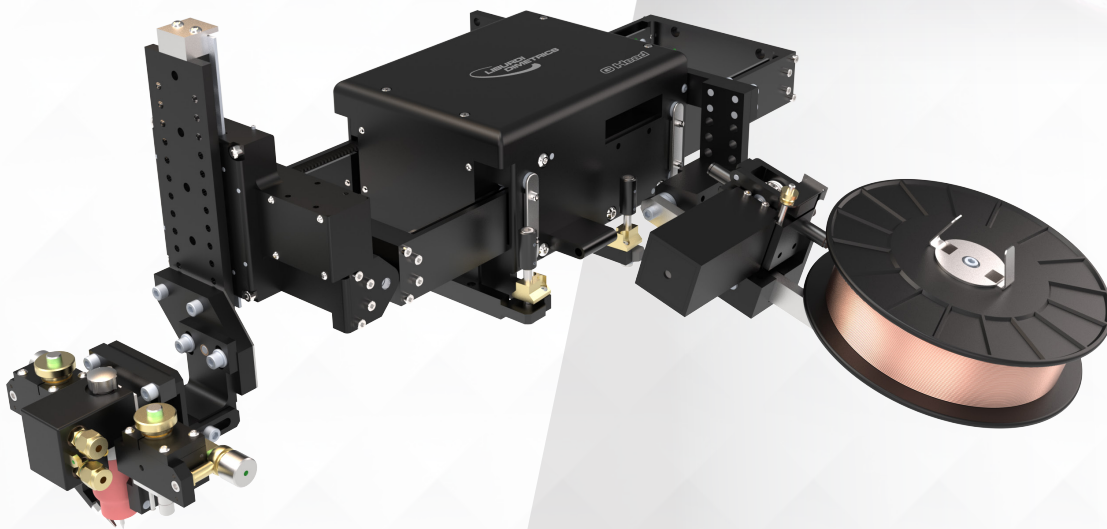
Field tested durable design

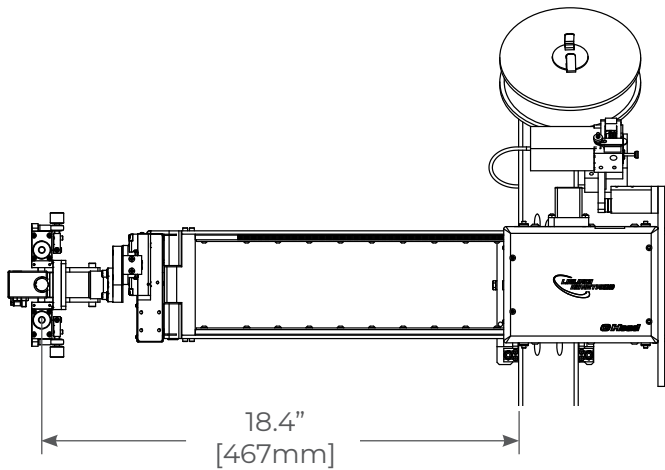


GTAW, GMAW, PAW & Hot Wire Processes



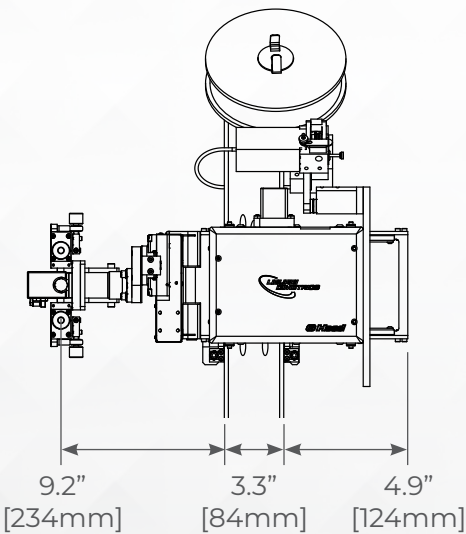
Commercially available consumables





### Specifications

- Travel speed: 0 to 20IPM [0.5m/min]
- Arc Height Control (AHC) stroke: 4" [102mm]
- Manual vertical torch adjustment: 3.5" [89mm]
- Torch oscillation/steering stroke: 9" [229mm]
- Torch tilt, lead/lag: +/-20 degrees
- Torch tilt, in/out: +/- 45 degrees
- Cable length: 35ft [11m]
- Weight: 25lbs [11kg] (without cable or wire spool)
- OD welding range: 4" [102mm] to infinity
- Wire size range: 0.030" [0.8mm] to 0.062" [1.6mm]



### Features

- Torch configurations:
  - Conventional, NG Blade, NG Flood Cup
- Hot Wire
- GMAW
- Water cooled weld monitoring cameras
- ID adapter kit
- Wire straightener
- Extension cables
- Extended AHC stroke
- Motorized tilt axis
- Tool center point kinematics

### Options

- Wire feeders:
  - 100IPM [2.5m/min] or 400IPM [10m/min], single or dual
- Wire spools:
  - 4" [102mm] or 8" [203mm], single or dual
- Wire nozzle adjustment (up/down, left/right), manual or motorized
- Oscillation configurations:
  - 2", 4", 6", 7", 8", 18.5" (custom OSC strokes available on request)

