

TUBE END FACING & BEVELING MACHINES

FM63RE



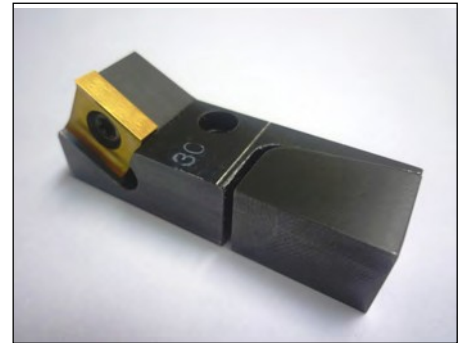
FEATURES & BENEFITS

- Graduated microfeed advancement for controlled material removal.
- Electrical motor with easy speed adjustment and control.
- Removable bench stand.
- Tool holder with tool insert.
- Standard aluminum collet sizes available: 3/4", 1", 1 1/2", 2".
- 2 1/2" clamping body.
- Storage and shipping case.
- Service wrenches.

The FM63 has a tube diameter clamping and facing capacity of 1/4" to 2 1/2". Plugged into any applicable power outlet, this robust working tool will produce the cleanest and flattest tube ends for any application.

OPTIONAL EQUIPMENT

- Tool holder enabling 30°/37.5° bevel cutting.
- Collets for various tube sizes including "A" size.
- All collets available in stainless steel.



30 degree bevel tool holder

TECHNICAL SPECIFICATIONS

Model No.	FM63RE
Clamping Capacity	1/4" - 2 1/2", (3,2 mm - 63,5 mm)
RPM (dual speed)	(i) 0 - 110; (ii) 0 - 320
Graduated Manual Feed	0.039"/rev., (1 mm/rev.)
Feed Stroke	0.39" (10 mm)
Drive	1100 W, (110V/220V; 50/60 Hz)
Weight (without stand)	14.11 lbs. (6,4 kg)