

TIP TiG

USA

*Quality makes
the Difference.*

The Evolution of TiG Welding!

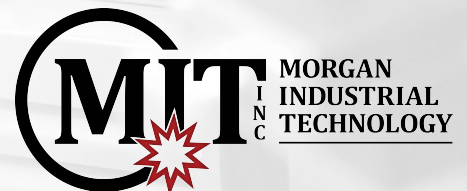
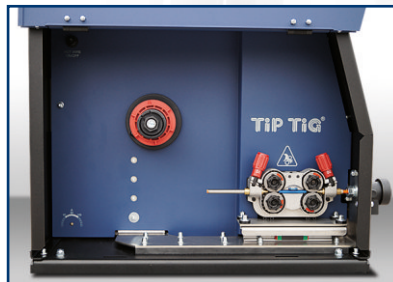
AllinOne Feeder

CW/HW Technology



Description

- TIG cold wire and hot wire welding with dynamic wire feed system
Dynamic wire feeding for a controllable weld pool even with positional welding:
The wire feeding is superimposed in parallel using a sinusoidal movement
- Up to 300 % faster welding speeds compared to TIG welding
- Up to 400 % improvement in deposition rate
- Dilution reduced by up to 80 %
- High process reliability and reproducible welding results
- Higher welding speed and easy handling
- Heat supply to the wire for improved deposition rate and an even lower risk of weld errors
- Perfect weld appearance, no weld spatters
- 4-Roll drive, Equipped for .030 / .035 / .040 / .045 wires
- Can be used with any TIG welding machine



Application range

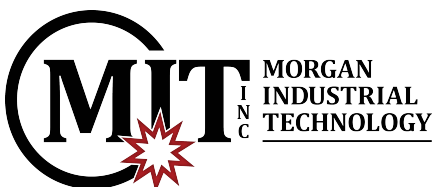
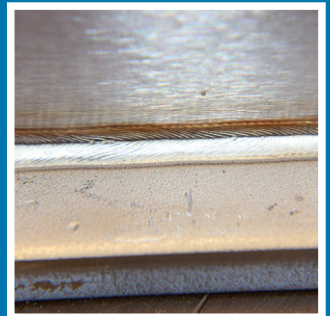
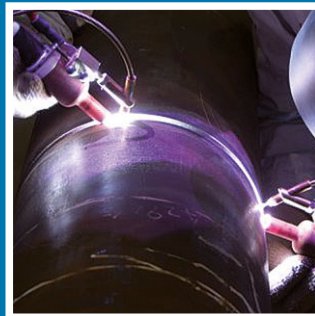
TIG DC for Hot Wire applications, TIG AC for Cold Wire applications

Materials for Hot Wire applications

Low-, medium- and high alloyed steel, Duplex, Superduplex, Copper and Titanium, Stellite, highly heat resistant and galvanized materials.

Technical data

■ Input Voltage	-	120 V (+/- 20 %)
■ Input Phase	-	1
■ Input Hz	-	50 / 60 Hz
■ Duty Cycle (40 °C)	-	500 A / 100 %
■ Wire Feed Speed	-	5.6 - 670 IPM
■ Wire Frequency	-	17 - 20 Hz
■ Net Width	-	13.85 in
■ Net Height	-	20.66 in
■ Net Length	-	23.62 in
■ Weight, wire feeder	-	74 lbs



1702 W Boat Street
Ozark, MO 65721
417-485-4575
sales@morganitech.com
www.morganitech.com